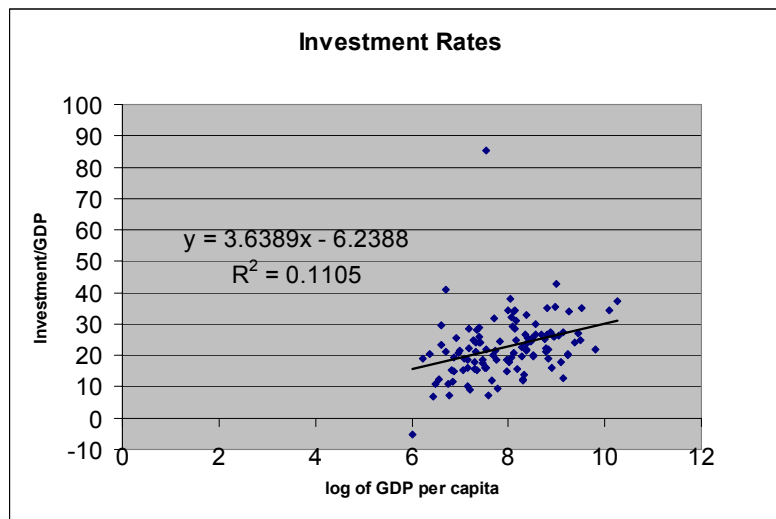
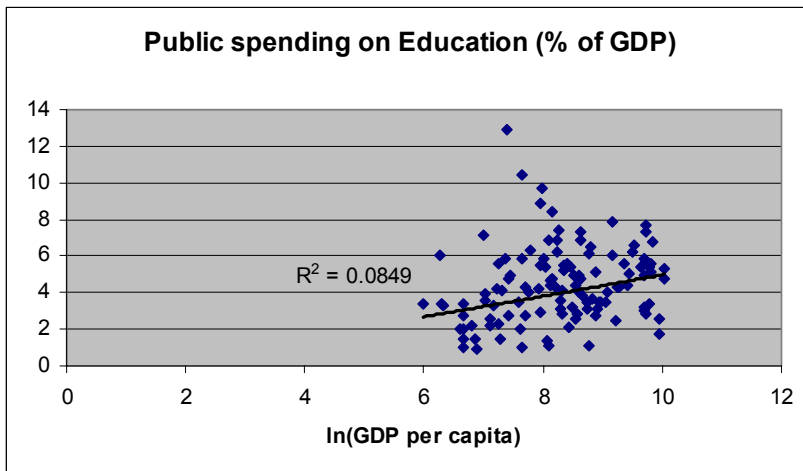
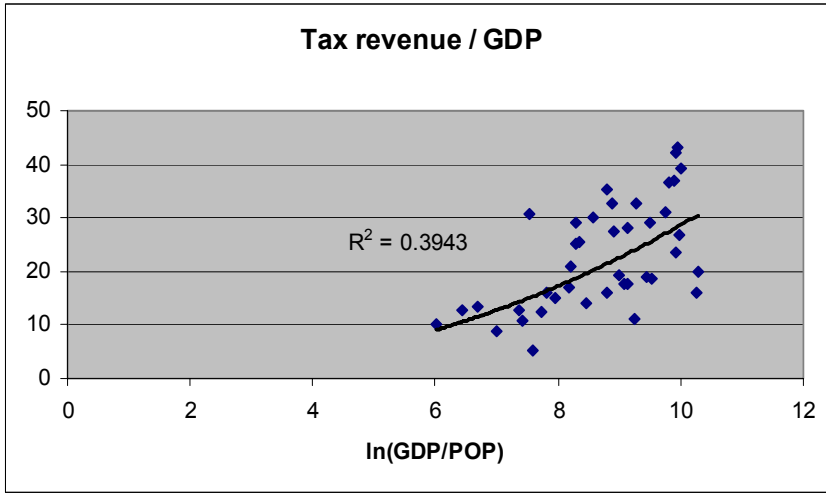
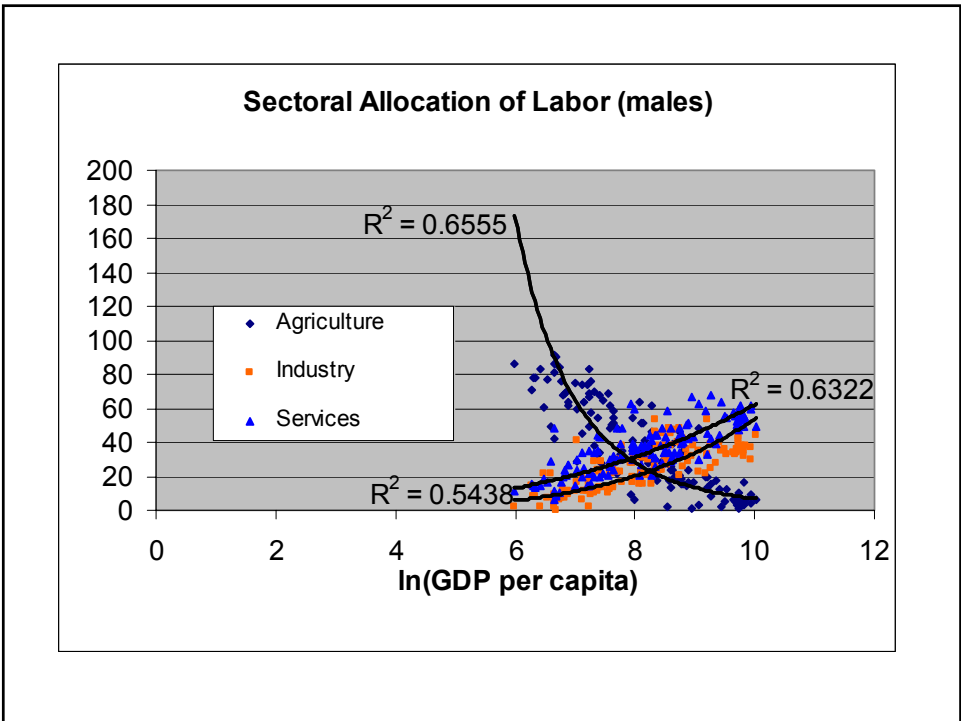
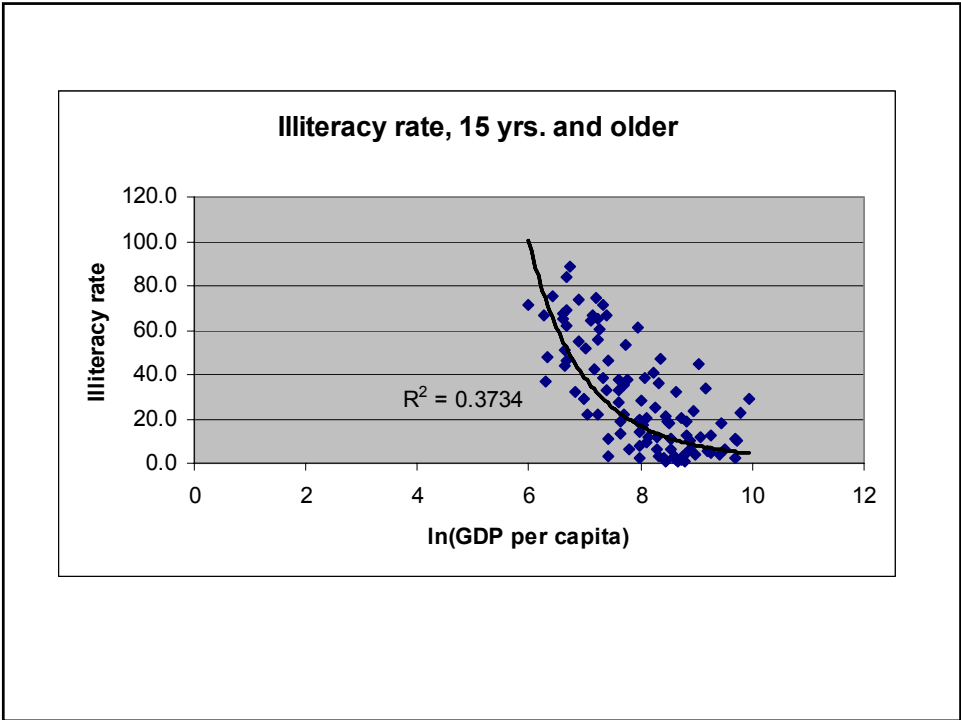


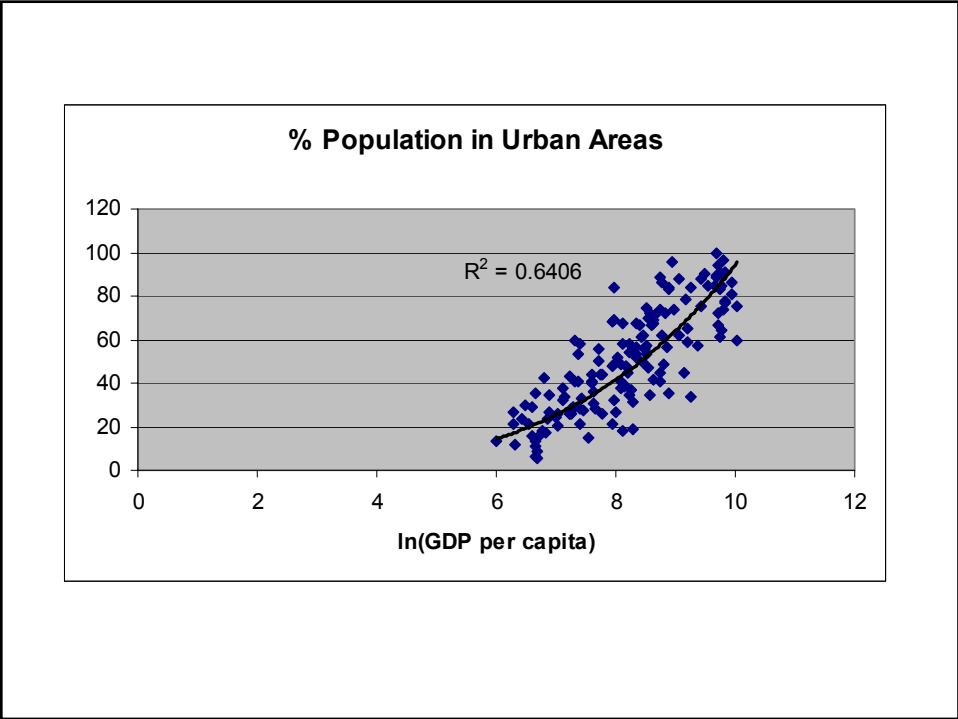
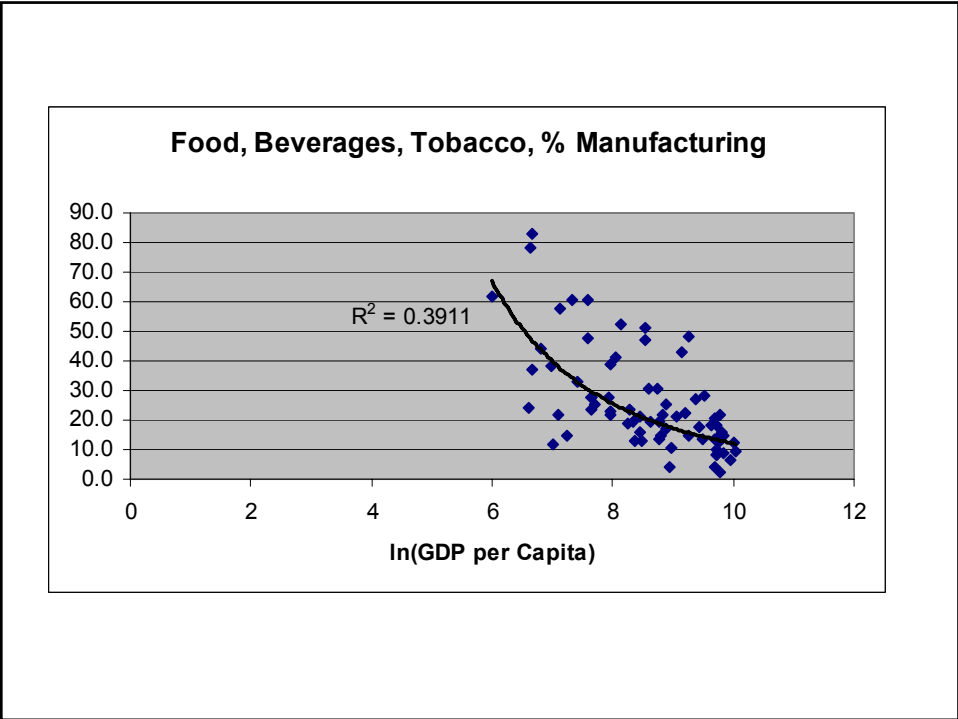
# Cross-country development patterns

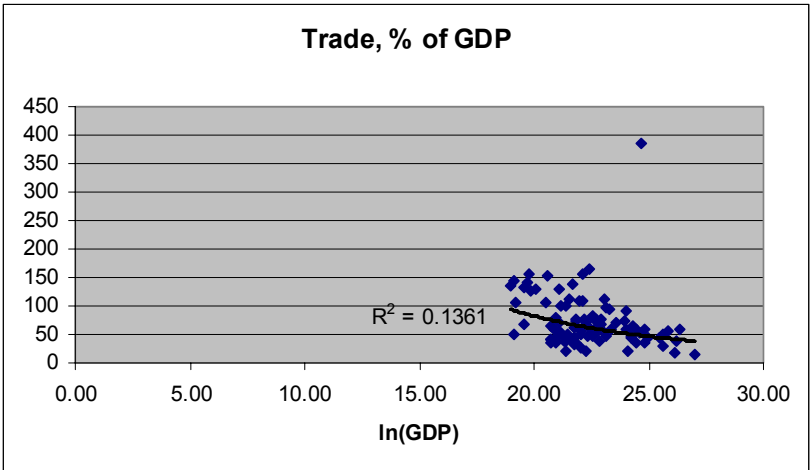
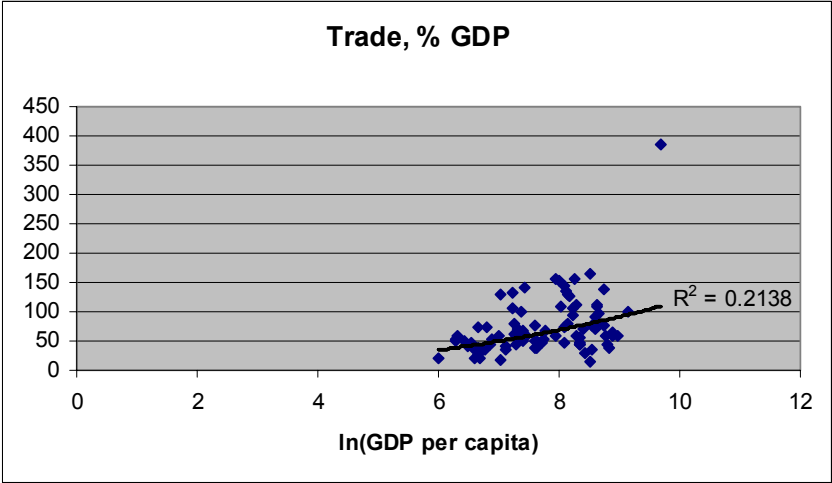
Econ 404W  
January 17, 2006



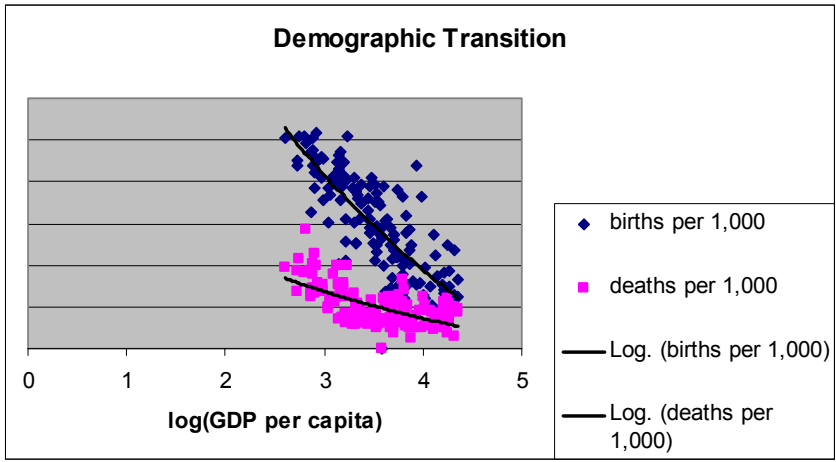




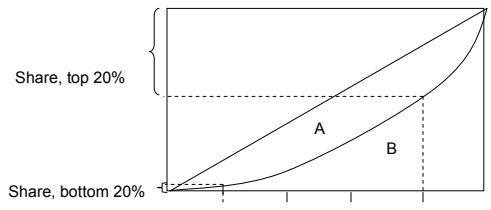




### Demographic Transition



### Summarizing Income Distributions



Gini coefficient:  $A/(A+B)$

## Income distribution and development

	constant	Ln(Y)	Ln(Y) <sup>2</sup>	Share ag.	socialist
top 20%	-8.71 (0.26)	46.92 (2.24)	-7.97 (2.10)	-0.26 (2.15)	-9.44 (3.27)
middle 40%	34.27 (1.57)	-5.81 (0.40)	0.98 (0.39)	0.23 (2.86)	0.75 (0.40)
lowest 40%	74.5 (4.01)	-43.8 (3.54)	7.00 (3.30)	0.03 (0.48)	8.70 (5.40)

Source: Alhuwalia (1976)